

TELEPHONE RECORDER

Muti-functional recorder supporting cloud platform management

The telephone recorder (short for recorder) is the third generation of recording product developed by Medou company. It adopts low-powered hardware architecture, embedded with Linux system, with built-in network firewall to provide more safe and reliable data protection and realise energy-saving. It has independent all-weather information recording, information record and local file storage. It can query recorder information through LCD, support mobile terminal APP, Web browser, dock cloud recording management platform, all of which is convenient for maintenance and management across regions.

4 Channels recorder

Support 4 channels analog line recording, 32G storage, recording storage for 8000 hours, provide API, built-in WIFI, support LCD display, POE



MDL2004

8 Channels recorder

Support 8 channels analog line recording, 500G storage, recording storage for 125000 hours, provide SDK, built-in WIFI, support LCD display, POE, optional dual disk redundancy



MDL2008

16 Channels recorder

Support 16 channels analog line recording, 500G storage, storage for 125000 hours, provide API, built-in WIFI, support for LCD display, optional dual disk redundancy



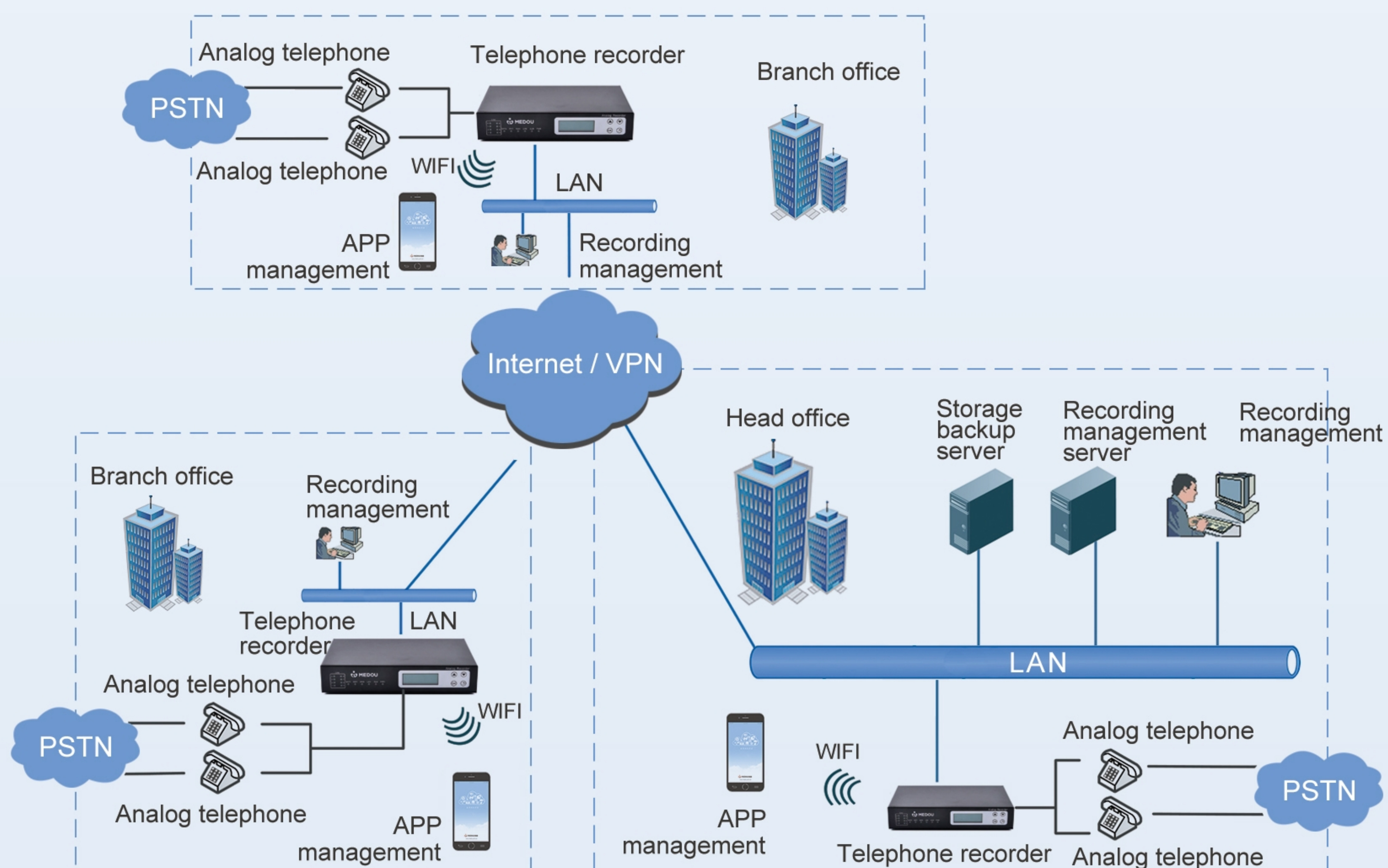
MDL2016

32 Channels recorder

Support 32 channels analog line recording, 1000G storage, storage for 250000 hours, provide API, built-in WIFI, support for LCD display, optional dual disk redundancy

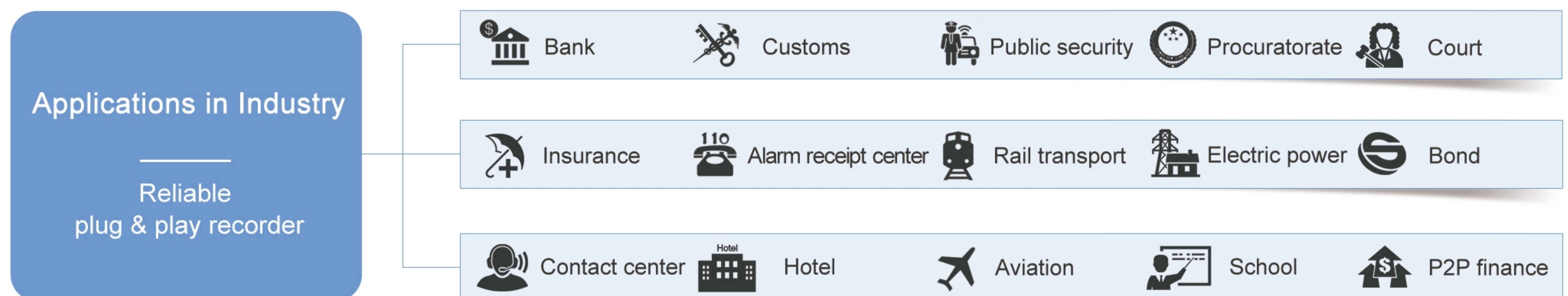


MDL2032



TELEPHONE RECORDER

The initiated power-off protection to ensure recording data will not be lost



Support pressure control, sound control, code control, polarity reversal, continuous recording and other recording mode.

Support recording statistics, report output, tape backup, FTP upload and storage.

Automatic cycle recording, audio recording inquiry, online play.

Support settings for non-recording, multi-level authority management, database backup.

Support IP access control, operation log inquiry.

Automatically record time of each call, number, ringing times, no-answer, call direction and other information.



Zhejiang Medou Communication Technology Co,Ltd All Right Reserved

Address: 3F,B5,NO.#21 Xinke R.d,Economic development District,Yiwu-China

Sales hot line: 0579—85113688

E-mail: medou@medou.com.cn

Technical service: 0579-85216116 (8h)

18969350768 (24h)

Web: www.medou.com.cn

Zip Code: 322000